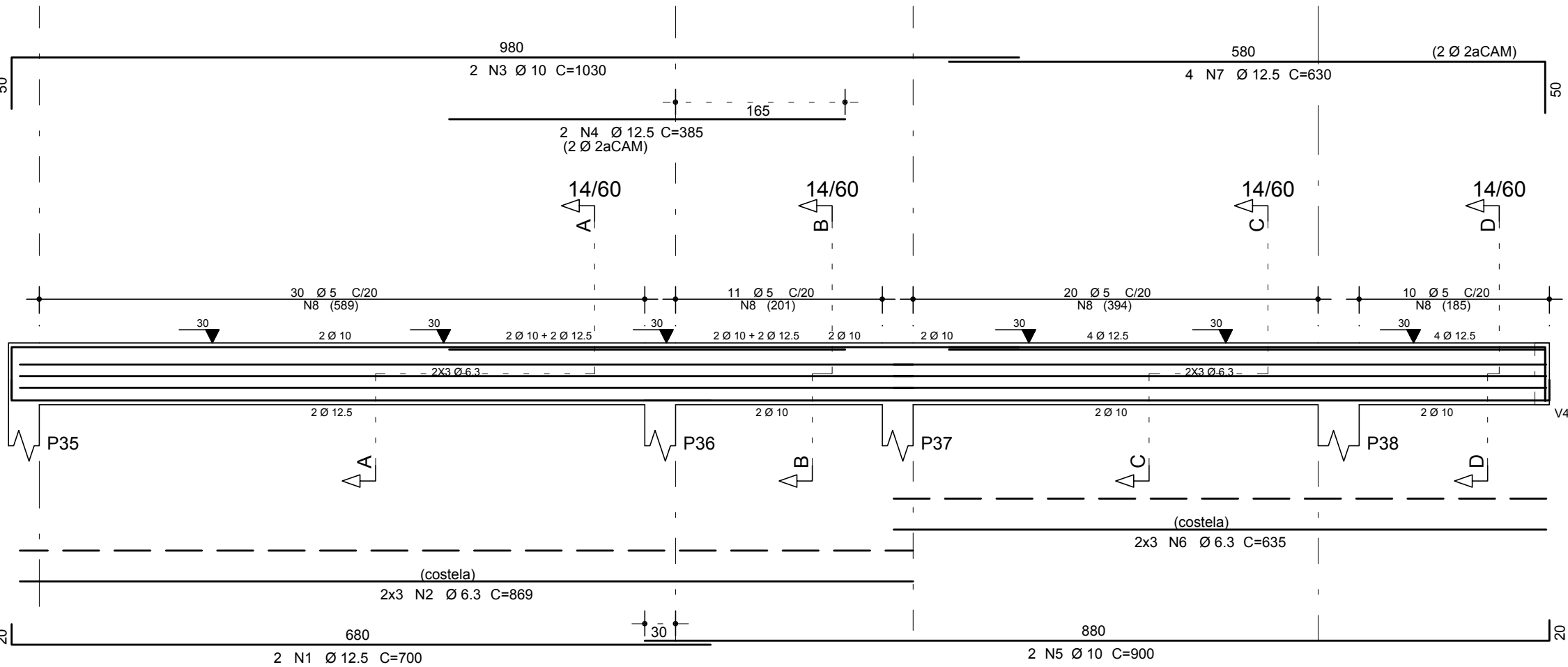


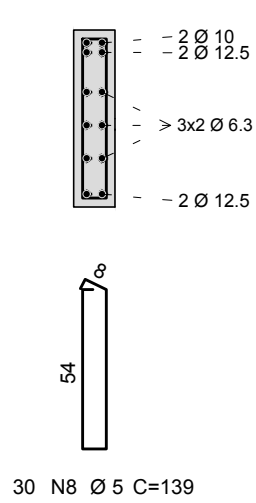
ARMAÇÃO DAS VIGAS

ESCALA 1/50  
CORTES: ESCALA 1/25

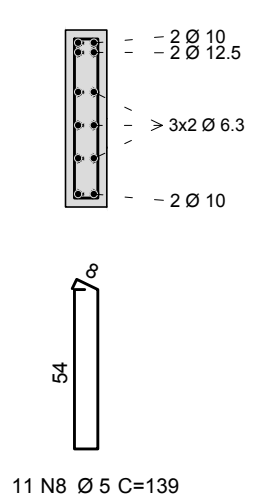
V12



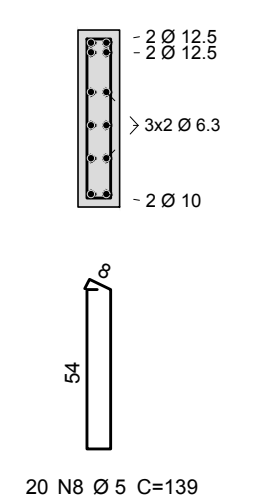
Corte A



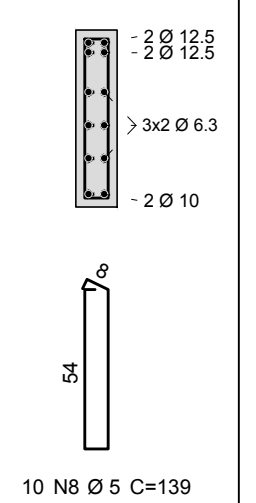
Corte B



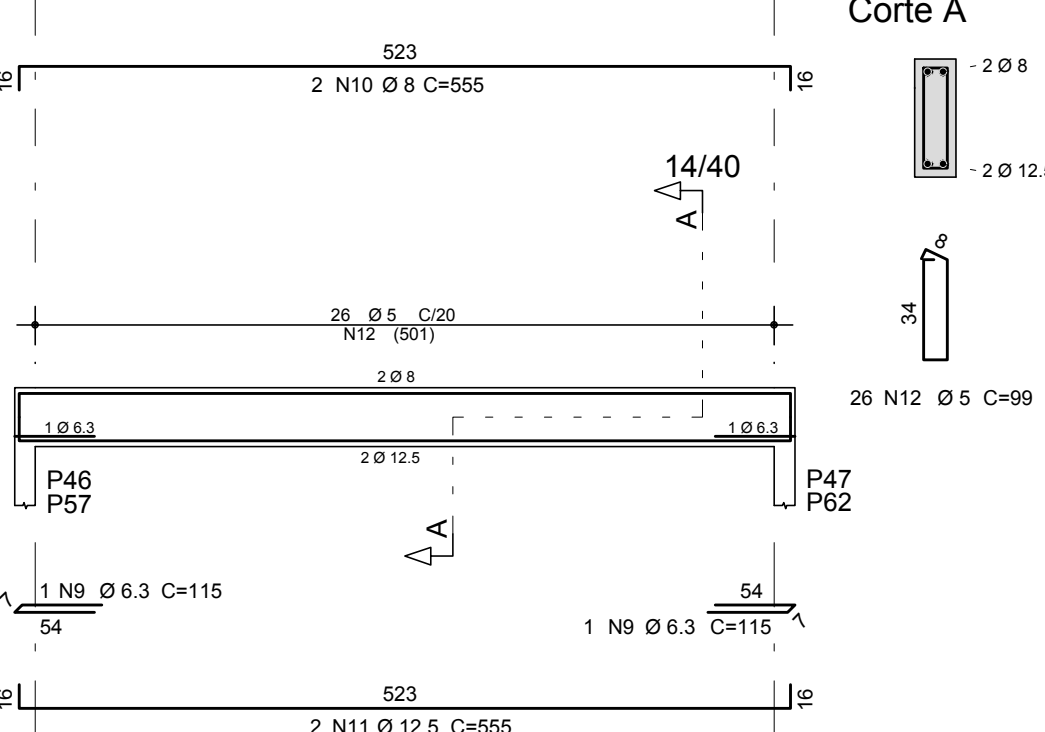
Corte C



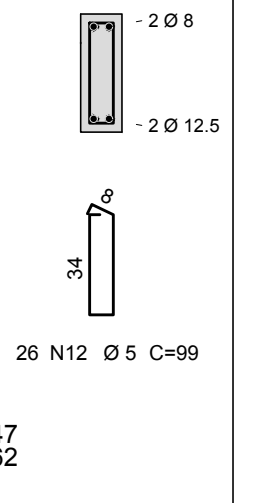
Corte D



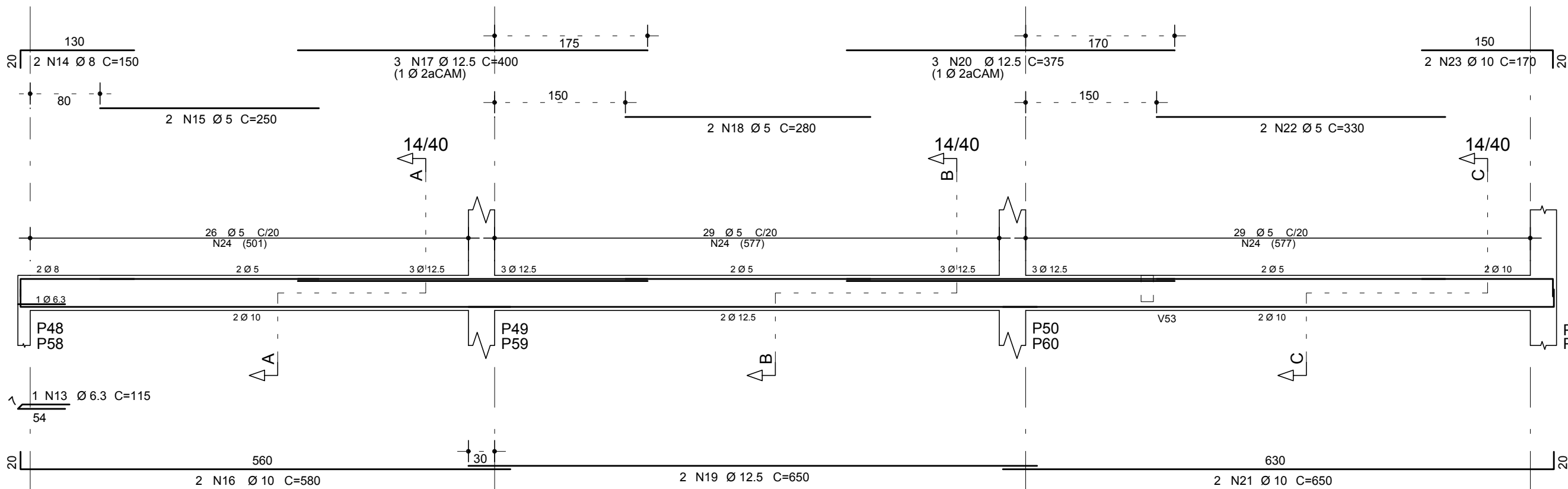
V13=V16



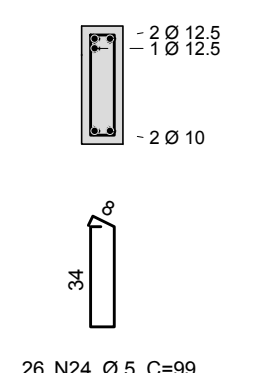
Corte A



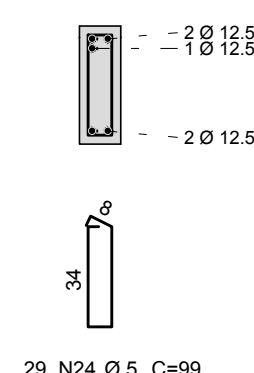
V14=V17



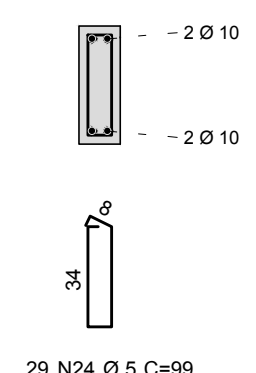
Corte A



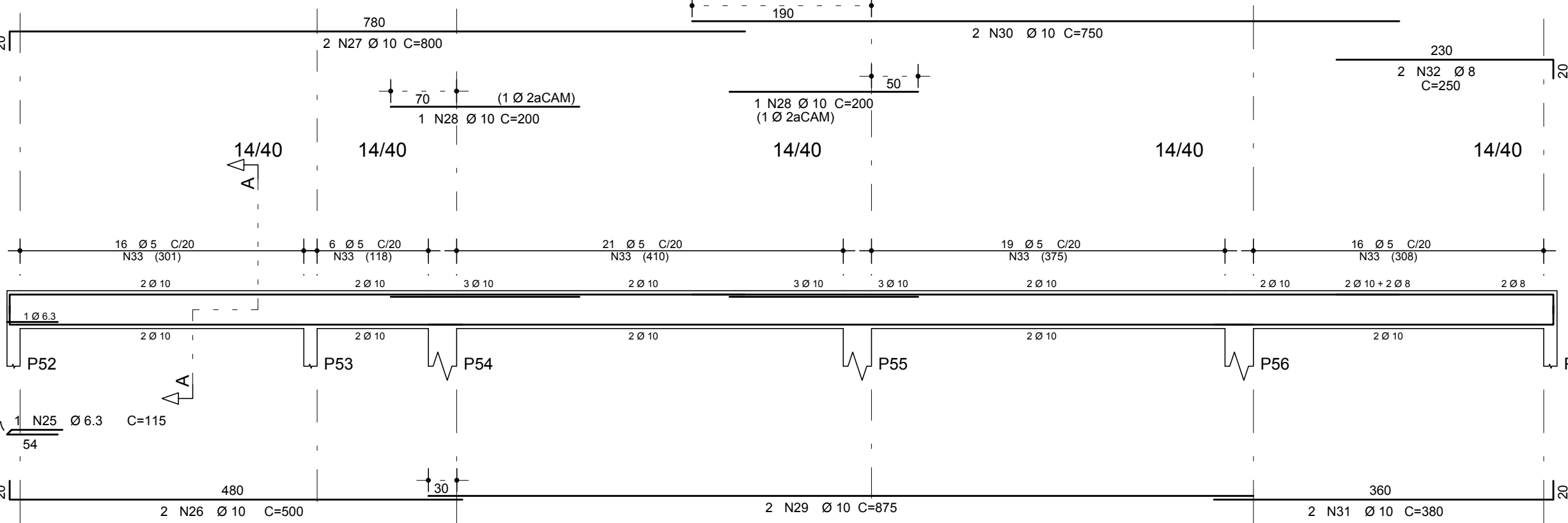
Corte B



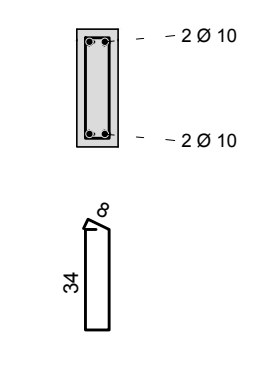
Corte C



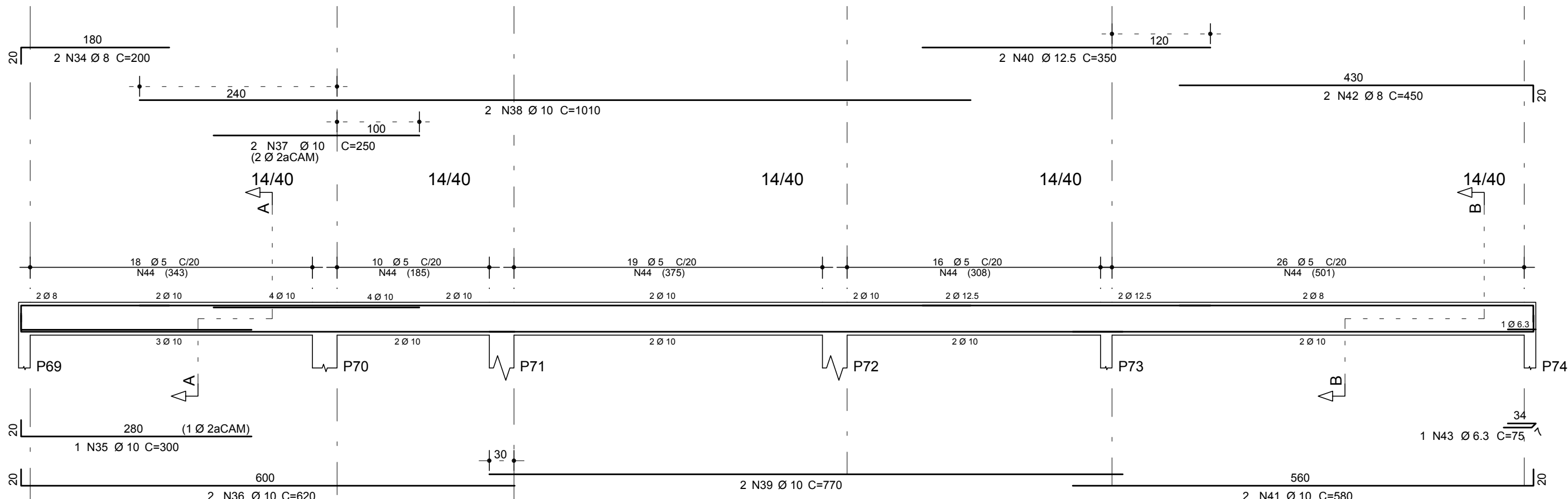
V15



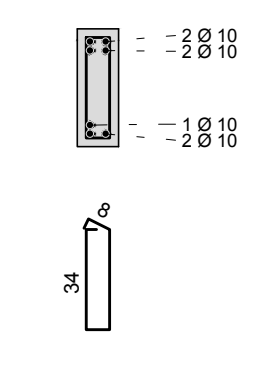
Corte A



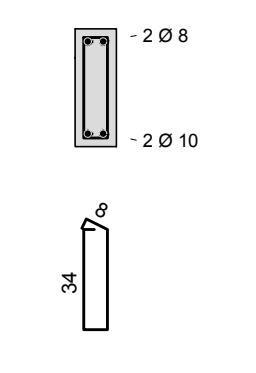
V18



Corte A



Corte B



AÇO	POS	BIT (mm)	QUANT	COMPRIMENTO	
				UNIT (cm)	TOTAL (cm)
V12	50A	1	12,5	2	700
	50A	2	6,3	6	869
	50A	3	10	2	1030
	50A	4	12,5	2	385
	50A	5	10	2	900
	50A	6	6,3	6	635
V13=V16 (X2)	50A	7	12,5	4	630
	50A	8	5	71	139
	50A	9	6,3	4	115
	50A	10	8	4	555
	50A	11	12,5	4	555
	50A	12	5	52	99
V14=V17 (X2)	50A	13	6,3	2	115
	50A	14	8	4	150
	50A	15	5	4	250
	50A	16	10	4	580
	50A	17	12,5	6	400
	50A	18	5	4	280
V15	50A	19	12,5	4	650
	50A	20	12,5	6	375
	50A	21	10	4	650
	50A	22	5	4	330
	50A	23	10	4	170
	50A	24	5	168	99
V18	50A	25	6,3	1	115
	50A	26	10	2	500
	50A	27	10	2	800
	50A	28	10	2	200
	50A	29	10	2	875
	50A	30	10	2	750

RESUMO AÇO CA 50-60			
AÇO	BIT (mm)	COMPR (m)	PESO (kg)
60B	5	517	80
50A	6,3	99	25
50A	8	46	18
50A	10	232	144
50A	12,5	149	143
Peso Total 60B =		80 kg	
Peso Total 50A =		330 kg	

NOTAS:

- 1-MEDIDAS EM CENTÍMETRO.
- 2-CONCRETO ARMADO, fck ≥ 25MPa.
- 3-COBRIMENTO DAS ARMADURAS c = 3,0 cm.
- 4-CONFERIR MEDIDAS NO LOCAL E COM A ARQUITETURA.

A M ENGENHARIA – PROJETO ESTRUTURAL

Fone: (089) 99975–9340 – e-mail: amengenharia.pi@hotmail.com

TITULO:

ARMAÇÃO DAS VIGAS V12 A V18

OBRA:

ESCOLA PADRÃO SEDUC – 10 SALAS DE AULA

ENDEREÇO:

RUA PROJETADA, S/N, FARTURA DO PIAUÍ – PI

PROPRIETÁRIO:

GOVERNO DO ESTADO DO PIAUÍ

FOLHA:

A1

CONSTRUTOR:

PROJETO:

FRANCHA:

10/20

DESENHO:

DATA:

JUNHO/2017

ESCALA:

INDICADA

PENAS
1 0,10 7
2 0,20 7
3 0,30 7
4 0,40 7
5 0,50 7
6 0,60 7
7 0,10 7
11 0,40 7
30 0,10 30
141 0,10 7
170 0,10 170
253 0,10 253
254 0,10 254